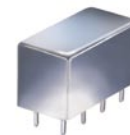


Plug-In Frequency Mixer

SRA-3+

Level 7 (LO Power +7 dBm) 0.025 to 200 MHz



Maximum Ratings

Operating Temperature	-55°C to 100°C
Storage Temperature	-55°C to 100°C
RF Power	50mW
IF Current	40mA

Pin Connections

LO	8
RF	1
IF	3,4 [^]
GROUND	2,5,6,7
CASE GROUND	2

[^] pins must be connected together externally

Features

- excellent conversion loss, 4.61 dB typ.
- high L-R isolation, 45 dB typ. L-I isolation, 40 dB typ.
- rugged welded construction
- hermetic

Applications

- VHF
- defense & federal communications
- FM broadcast radio

CASE STYLE: A01
PRICE: \$20.20 ea. QTY (1-9)

+ RoHS compliant in accordance with EU Directive (2002/95/EC)

The +Suffix has been added in order to identify RoHS Compliance. See our web site for RoHS Compliance methodologies and qualifications.

Electrical Specifications

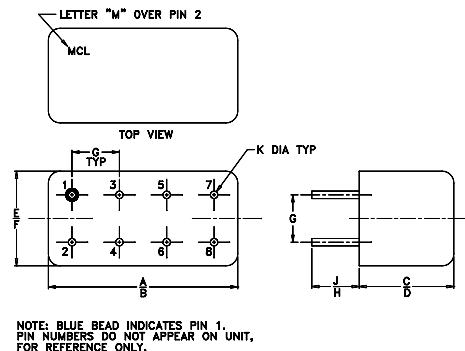
FREQUENCY (MHz)		CONVERSION LOSS (dB)				LO-RF ISOLATION (dB)						LO-IF ISOLATION (dB)					
LO/RF f_L - f_U	IF	Mid-Band m		Total Range		L		M		U		L		M		U	
		\bar{X}	σ	Max.	Max.	Typ.	Min.	Typ.	Min.	Typ.	Min.	Typ.	Min.	Typ.	Min.	Typ.	Min.
.025-200	DC-200	4.61	.06	7.5	8.5	60	50	45	35	35	25	45	35	40	30	30	20

1 dB COMP.: +1 dBm typ.

L = low range [f_L to $10 f_L$]
m = mid band [$2 f_L$ to $f_U/2$]

M = mid range [$10 f_L$ to $f_U/2$] U = upper range [$f_U/2$ to f_U]

Outline Drawing



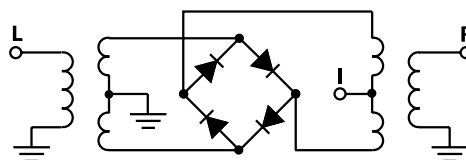
Outline Dimensions (inch/mm)

A	B	C	D	E	F
.770	.800	.385	.400	.370	.400
19.56	20.32	9.78	10.16	9.40	10.16
G	H	J	K	wt	
.200	.20	.14	.031	grams	
5.08	5.08	3.56	0.79	5.2	

Typical Performance Data

Frequency (MHz)		Conversion Loss (dB)	Isolation L-R (dB)	Isolation L-I (dB)	VSWR RF Port (:1)	VSWR LO Port (:1)
RF	LO	LO +7dBm	LO +7dBm	LO +7dBm	LO +7dBm	LO +7dBm
0.025	30.03	6.94	58.72	53.27	1.16	2.06
0.04	30.04	5.80	55.35	51.43	1.17	2.04
0.05	30.05	5.52	54.61	51.09	1.17	2.01
0.10	30.10	5.16	53.51	50.41	1.16	1.99
0.20	30.20	4.98	53.27	50.18	1.16	2.05
0.50	30.50	4.92	53.12	50.13	1.15	2.08
1.00	31.00	4.82	53.18	50.48	1.15	2.07
2.00	32.00	4.77	53.13	50.55	1.14	2.07
5.00	35.00	4.76	53.42	50.99	1.13	2.05
10.00	40.00	4.81	53.68	51.27	1.11	2.02
20.00	50.00	4.87	53.67	50.52	1.10	2.02
38.48	68.48	4.96	53.25	48.52	1.09	2.02
50.00	80.00	4.94	53.49	47.54	1.09	2.03
69.25	99.25	4.90	53.53	45.77	1.08	2.03
84.63	54.63	4.86	53.31	44.13	1.09	2.05
100.00	70.00	4.81	53.55	42.70	1.11	2.07
123.09	93.09	4.87	55.31	40.58	1.13	2.11
153.85	123.85	4.96	52.97	38.04	1.15	2.13
176.93	146.93	5.19	49.53	38.76	1.18	2.14
200.00	170.00	5.28	45.61	38.31	1.21	2.15

Electrical Schematic



Performance Charts

SRA-3+

